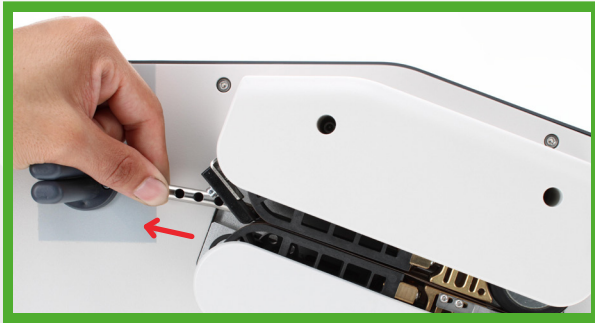


# ASFX2 Machine Blade Replacement Instructions



Machine should be turned off before replacing the blade. Blade sold separately.

- 1. Pull the air nozzle to the left and over the feeder. This will allow you to remove the air nozzle and expose the blade.**



- 2. Holding the tip of the air nozzle, use the provided tool to turn the bolt counterclockwise to remove the blade.**

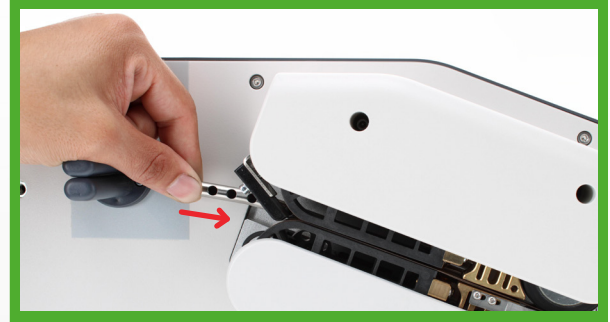


- 3. Place the new blade on the air nozzle and turn the bolt clockwise until it is secure.**

**Note: Hand tighten only. Over tightening can cause the blade to break.**



**4.** Slide the air nozzle over the feeder into the machine. The air nozzle should click back in place.



**AirSaver<sup>®</sup>**

• 800-782-9008 • 951-738-4650 • Fax: 951-273-2175  
info@airsaverpack.com | www.airsaverpack.com